

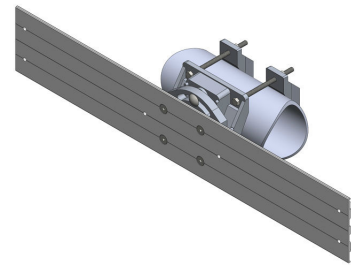


CAN-BRAC CLAMP SIGN ASSEMBLY

OVERVIEW

The Sign Bracket is a simple and efficient way to create a permanent fixture for road and traffic signs without requiring two bucket trucks. With its easy adjustability, it is easy to display informative signs for road traffic.

The sign extrusion will provide reinforced backing for signs and increased support over a larger area.



Horizontal

FEATURES—CAN-BRAC TENON MOUNT- SIGN ASSEMBLY

- Ease of installation
- 72 degrees of rotation adjustments
- Vertical or horizontal configurations
- Available in precut extrusion lengths from 12" to 96"
- Stainless steel hardware
- Mounts on tenons from 2-3/8" to 5" via clamps.

CONTACT US AT 1-844-668-6848



CAN-BRAC CLAMP SIGN ASSEMBLY

ORDERING INFORMATION

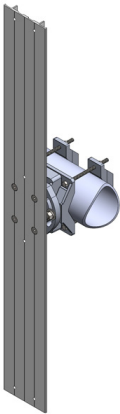
PART NUMBER	DESCRIPTION
CCS-E24	CAN-BRAC Sign 24" Extrusion
CCS-E36	CAN-BRAC Sign 36" Extrusion
CCS-E48	CAN-BRAC Sign 48" Extrusion
CCS-E60	CAN-BRAC Sign 60" Extrusion
CCS-E72	CAN-BRAC Sign 72" Extrusion
CCS-E96	CAN-BRAC Sign 96" Extrusion

SPECIFICATIONS

- Finish: Cast aluminum
- Material: Primary grade aluminum
- Colors: Available as required. Please visit our paint page for more details

SUPPORT & WARRANTY

We believe so much in the quality of our products that we offer an industry leading support and warranty program, five years of warranty from date of initial purchase. If it breaks on installation we will replace it, no questions asked.



Vertical