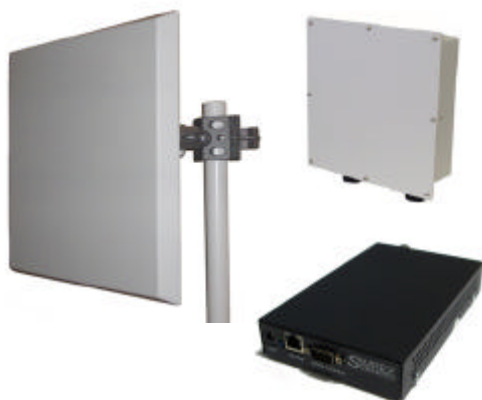


DataMover Wideband Integrated Data Link

5.8 GHz Frequency
Up to 54 Mbps Data Rate
Watertight and Weatherproof
Built-in Antenna

WIDEBAND wireless PERFORMANCE



Features

- High Speed Data Rate - Up to 54Mbps
- CPE/Bridge or AP/Repeater
- Wall/mast clamp with pan/tilt
- PoE built-in for single cable installation
- Integral 23 dBi Panel Antenna

Capability

- OFDM modulation improves non line-of-sight performance
- High TX Output Power and High RX Sensitivity
- Point-to-point, Point-to-multipoint Wireless Connectivity

Management

- Browser or SSH Remote Configuration

Functions

- NAT/DHCP support
- Repeater mode.
- Watertight and Weatherproof (IP67)
- MAC address filtering (AP Mode)
IP/MAC tunneling
- Browser or SSH Remote Configuration

SIMREX..Global wireless solutions. Wireless Outdoor Bridge

For more than 2 decades, SIMREX Corporation's wireless products have been providing wireless networking solutions with applications in SCADA, telemetry, telecommunications, mobile data and online transaction markets. SIMREX Corporation provides licensed and unlicensed frequency solutions worldwide.

Product Overview

The DataMover WB Outdoor Wireless Multi-Client Bridge/Access Point/repeater operates seamlessly in the 5.8 GHz frequency spectrum supporting 1 Mbps - 54 Mbps wireless transmission.

The DataMover WB utilizes OFDM modulation that can significantly improve throughput in non line of sight conditions. The DataMover WB has high TX output power and high RX sensitivity. These features can extend range and reduce the expense of equipment in the infrastructure. The narrow antenna beamwidth of 10 degrees provides significant off axis interference rejection.

To protect the security of your data, all wireless transmissions may be encrypted through WPA/WPA2 personal and enterprise (with dynamic key from remote RADIUS server) with TKIP, AES (CCMP). The MAC addresses filter and IP/MAC tunneling let you select exactly which remote stations should have access to your network.

Product Benefits

- Capable of handling heavy data payloads such as MPEG video streaming.
- High TX power and high RX sensitivity allow for minimum number of Access Point locations and cost savings.
- For mobile applications, increased operation distance and reduction of roaming hand-offs between APs for a more stable wireless connection.
- Transfer data between two buildings or multiple buildings.
- Administrators can remotely configure or manage the Access Point easily.
- Powerful data security ensures a secure network connection.
- MAC filter enhances security by insuring the identity of users connected to the client bridge.
- Simultaneous wireless AP and Bridge mode for wireless repeater functionality.
- Weather tight IP67 enclosure for outdoor use.
- Built in high gain antenna saves on hardware cost and eliminates external RF cable.
- Easy to install.

* Wireless signal rate based on over the air rates. Typical aggregate throughput is 50% to 60% of the over the air rate. Actual throughput may vary. Network conditions and environmental factors lower actual throughput rate.

** All specifications are subject to change without notice.

DATAMOVER™ WB-K58B

Specifications

Data Rates	6, 9, 12, 18, 24, 36,48,54 Mbps	Firmware Upgrade	Upgrade firmware via webbrowser
Power Requirements	Active Ethernet POE (18 VDC) External: Autosense 100/240 VAC; 50/60 Hz	Mangement	SSH, SNMP, FTP, IP/MAC discovery (CDP)
Regulation	FCC Part 15.247, IC RS210	IT/ Network Features	802.1d (STP, Spanning Tree Protocol), NTP, (Network time Protocol) , QOS, VPN, VLAN, IPsec, DHCP client/server, NAT, firewall, filtering, routing, WMM (per 802.11e)
Frequency Band	5.20 - 5.825 GHz	Diagnostic Features	BW, test, Registered Client list, Antenna alignment
Channels size	5,10,20,40 MHz	Typical Performance Requirements	
Radio Type	OFDM	<ul style="list-style-type: none">• Provide a wireless path connection that has a minimum 20dBm fade margin below the allowable receive sensitivity of the wireless radio.	
Media Access Protocol	Carrier Sense Multiple Access with Collision Avoidance (CSMA/CA)	Physical	23 dBi Integrated Antenna Version
Wireless Protocol	802.11/a/b/g/n as standardized/regulated for band. (802.11/a for 5800 MHz 802.11/n optional), SimStream TDMA available on all bands DFS (Dynamic Frequency Selection) for 5200 to 5825 MHz band Multiple SSIDs	Dimensions	13.00" (L) x 13.00" (H) x 3.4" (D) 330 mm(L) x 330 mm(H) x 85mm (D)
Modulation Technology	Orthogonal Frequency Division Multiplexing (OFDM) DBPSK, QPSK, BPSK,16-QAM, 64-QAM	Weight	6.25 lbs (2.8 Kg) including mounting bracket
Receive Sensitivity (Typical)	-94 dBm @ 6 Mbps (OFDM) -86 dBm @ 24 Mbps (OFDM) -74 dBm @ 54 Mbps (OFDM)	Temperature Range	Operating: -40°C to 75°C
RF Output Power	28 dBm (600 mW) @ 6,9,12,18 & 24 Mbps 26 dBm @ 36 Mbps 24 dBm @ 48 Mbps 23 dBm @ 54Mbps	Humidity	5%~95% Typical (non-condensing)
Antenna	23 dbi Internal Flat Panel Directional Antenna	Wind Survivability	125 MPH (201 KM/H)
RF connector	N type on DM WB-K58B-X version	Available Models	
Operation Mode	Point-to-Point/ Point-to-Multipoint Bridge/ AP/ Client Bridge/Repeater	<ul style="list-style-type: none">• 23 dBi Integral Flat Panel Antenna (DM WB-K58B-23)• External Antenna (Dish, Sector, etc.) (DM WB-K58B-X)• Shelf Mount (DM WB-K58B-IDU)• Dual Ethernet Ports (DM WB-K58B-x-E2)• Dual Antennas (DM WB-K58B-x-A2)	
Interface	1x 10/100 Mbps RJ-45 LAN Port	Note:	Some variants can be combined.
Security	WPA, WPA2, AES-CCM & TKIP 802.1x, WEP Mac/RADIUS server authentication, EAP-TLS, EAP pass through		

All specifications are subject to change by Simrex without prior notice

SIMREX CORPORATION

SALES & ENGINEERING

GILBERT, ARIZONA 85234 USA
PHONE (480) 926-6069
FAX (305) 675-7794
WWW.SIMREX.COM

MANUFACTURING & SERVICE

1223 WILLIAM ST.
BUFFALO, NEW YORK 14206 USA
PHONE (716) 206-0174
FAX (716) 852-1223

SIMREX Datamover products are manufactured under a quality system certified to ISO 9001. Simrex reserves the right to make changes to specifications of products described in this data sheet at any time without notice and without obligation to notify any person of such changes.

© 2006 SIMREX Corporation

2150407