



# CAN-BRAC BAND SIGNAL ASSEMBLY

## OVERVIEW

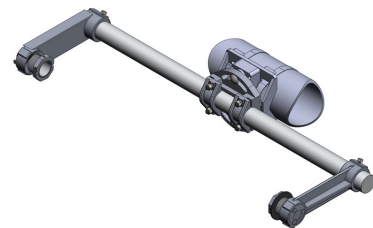
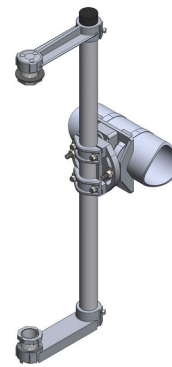
The CAN-BRAC is made of primary grade aluminum alloy designed for maximum strength, corrosion resistance and ductility. This design installs on any size mast-arm from 2" and up using bands.

The CAN-BRAC has rigid and captive mounting hardware (made of stainless steel)—available in Horizontal and Vertical options (72° rotation).

The CAN-BRAC Pipe Extrusion has a unique profile, which eliminates the need for filler extrusions and cross threading during assembly and installation. Flexible wire access extrusion cover ensures easy assembly and maintenance, especially during winter conditions.

## FEATURES—CAN-BRAC BAND

- Quick and simple installation
- Full stainless steel hardware
- Fits multiple signal configurations: Vertical, Horizontal, 1-Way, 2-Way and Cluster
- Ships fully assembled and requires no special tools for installation



CONTACT US AT 1-844-668-6848



# CAN-BRAC BAND SIGNAL ASSEMBLY

## ORDERING INFORMATION

SECTIONS	PART NUMBER
3 Section Vertical Nipple	CBL-300VN
4 Section Vertical Nipple	CBL-400VN
5 Section Vertical Nipple	CBL-500VN

For horizontal orientation add suffix "H" to part # in place of V and for TRI BOLT add suffix "T" in place of N when ordering. Band Sold separately. Additional options available. Contact sales for details

## SPECIFICATIONS

**Finish:**

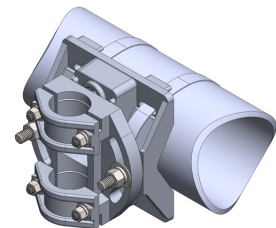
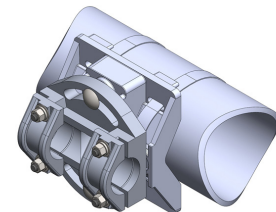
Cast Aluminum

**Material:**

Primary Grade Cast Aluminum

**Colors:**

Available as required. Please visit our paint page for colors.



## SUPPORT & WARRANTY

We believe so much in the quality of our products that we offer an industry leading support and warranty program—ten years of warranty from date of initial purchase. If it breaks on installation—we will replace it, no questions asked.