



# EDA ARM ASSEMBLY

## OVERVIEW

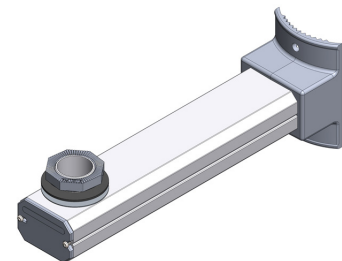
There are multiple applications for the EDA Arm Assembly, such as cameras, detectors, solar panels, or a signal assembly. With no loose parts and no welded joints, this device is a one-piece arm construction and there is no assembly required.

The unique nipple design simplifies head installation. There are locking features of the octagonal nuts (with a set screw) to prevent unfastening of the nut caused by vibration.

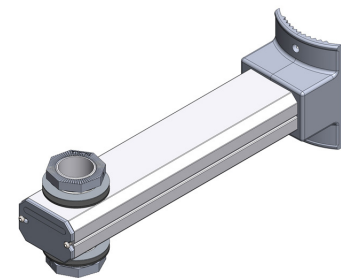
The EDA Arm Assembly is made of primary grade aluminum alloy for maximum strength, corrosion resistance and ductility.

## FEATURES—EDA ARM ASSEMBLY

- Strong one-piece design
- Single or double arm application
- No assembly required
- Available up to 34" lengths
- Allows for multi-way configurations
- Easy access to wiring channel allows for maintenance without removing arms from pole



Top or Bottom Arm



Center Arm

CONTACT US AT 1-844-668-6848

# EDA ARM ASSEMBLY

## ORDERING INFORMATION

PART NUMBER	DESCRIPTION
EDA-095	EDA Arm Assembly, Top or Bottom 9.5"
EDA095S	EDA Arm Assembly, Top & Bottom Set 9.5"
EDA-12	EDA Arm Assembly, Top or Bottom 12"
EDA-16	EDA Arm Assembly, Top or Bottom 16"
EDA-18	EDA Arm Assembly Top or Bottom 18"
EDA-20	EDA Arm Assembly Top or Bottom 20"
EDA-095C	EDA Arm Assembly Center Arm 9.5"
EDA-16C	EDA Arm Assembly Center Arm 16"
EDA-20C	EDA Arm Assembly Center Arm 20"
Note: Dimensions indicated are from edge of pole to center of nipple. Additional arm lengths available. Contact sales for details.	

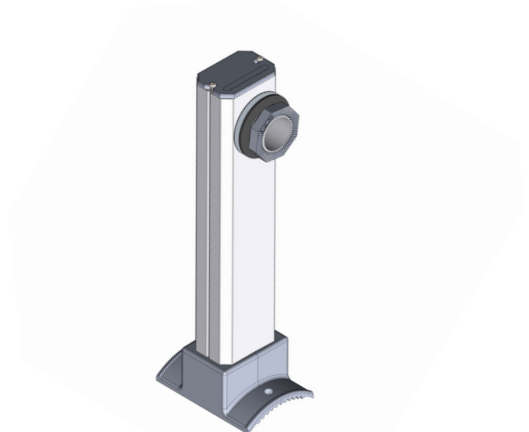
## SUPPORT & WARRANTY

We believe so much in the quality of our products that we offer an industry leading support and warranty program, five years of warranty from date of initial purchase. If it breaks on installation we will replace it, no questions asked.

**CENTRAL OFFICE**  
300 International Drive, Suite 100  
Buffalo, NY 14221  
[www.traffichardware.com](http://www.traffichardware.com)

## SPECIFICATIONS

**Material:** Base: Primary grade aluminum  
Arm: 6061-T6 aluminum  
**Finish:** Cast aluminum  
**Colors:** Available as required. Please visit our paint page for more details  
**Machine:** Computer Numeric Controlled machining (CNC) to within 0.001" of specification



Top or Bottom Arm